

**NEW!**

**aquadrive**<sup>®</sup>  
antivibration system



CV 48



## CV 48: A new CV joint for Aquadrive

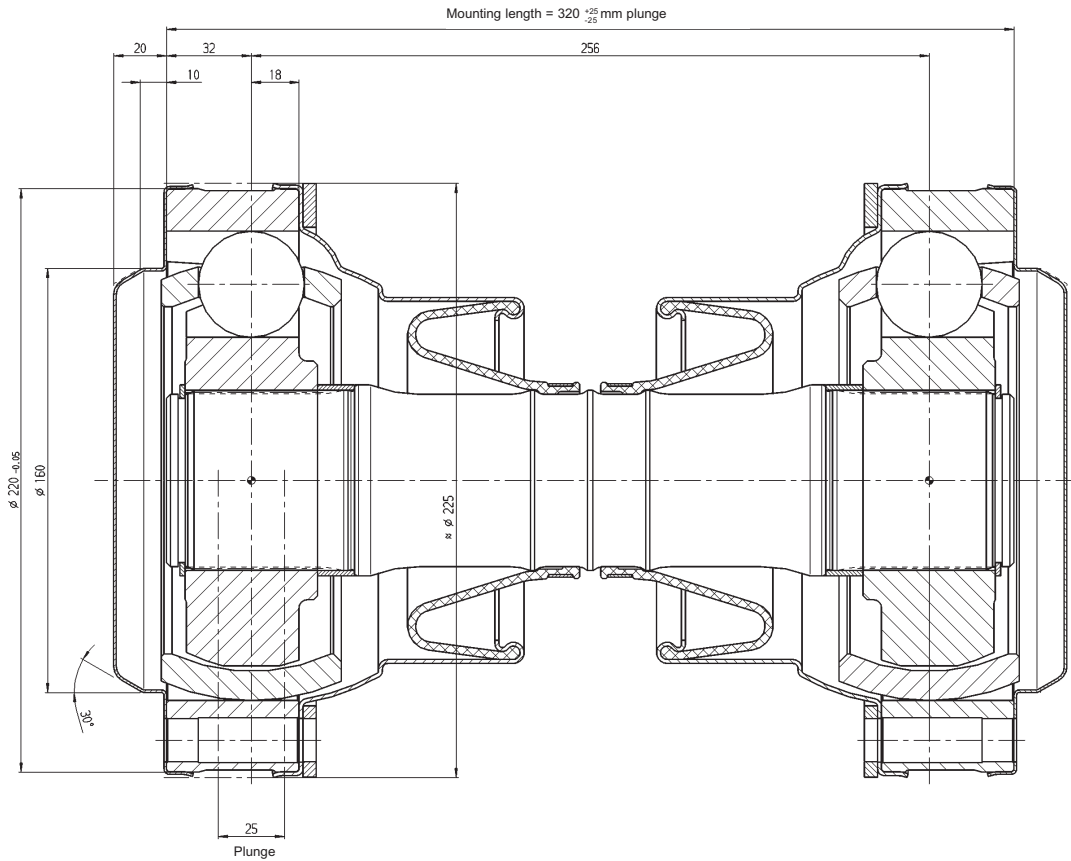
- ▶ We are proud to present the latest development and a long awaited addition to the Aquadrive family - CV48. This brand new CV size will fill a gap for boats utilising mid-range 500 - 900 horsepower engines. It is a welcome solution in those cases where systems with CV 42 are too weak and systems with CV 60 too heavy. The new CV shaft makes Aquadrive an even more flexible system with the ability to solve noise and vibration problems for almost any boat from 5 hp to 2000 hp.



For further information please contact:  
Off-Highway Powertrain Services Germany GmbH  
Ottensener Straße 150  
22525 Hamburg  
Phone: +49 (0) 40 5400 900  
customerservice.hamburg@walterscheid.com

# CV 48 Technical Data

## CV 48



	CV 42	CV 48	CV 60
Max. static torque (Nm)	19700	22000	40000
Max. speed (rpm)	3000	3000	2000
Joint angle	10°	10°	3°
Mounting length	270	320	370

Off-Highway Powertrain Services

Headquarters:  
Off-Highway Powertrain Services GmbH Germany  
Hauptstr. 150  
53797 Lohmar  
Germany  
[www.aquadrive.com](http://www.aquadrive.com)

© Walterscheid. All rights reserved.

